

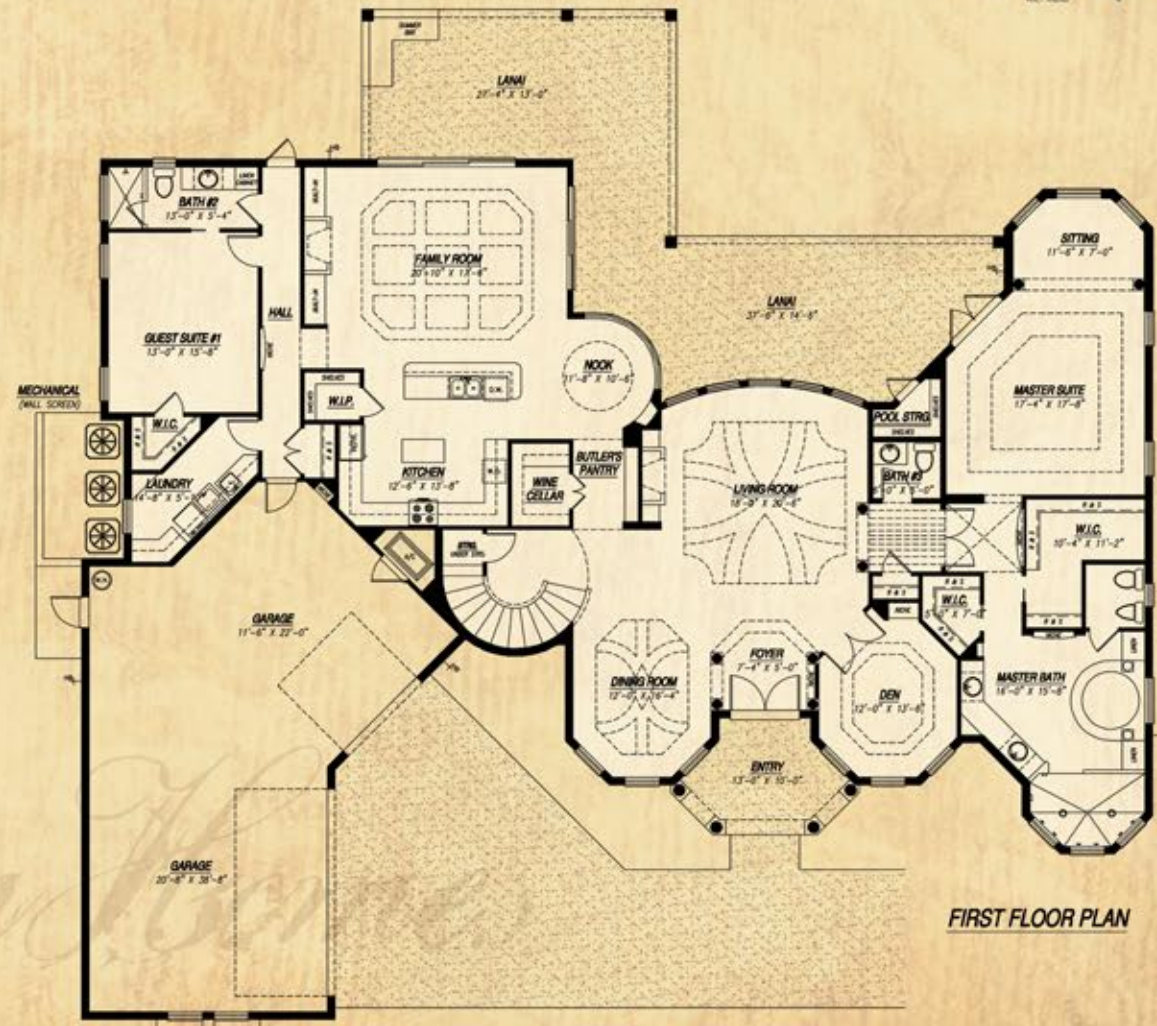
PORTOFINO

The Portofino is 4,272 sq. ft. of pure comfort. Indulge yourself in this lavishly appointed, first floor master suite and bath. The circular staircase leads you to the second floor retreat with home theater, lounge area and suite with an 18' x 13' covered balcony. With 1,071 sq. ft. of lanai, covered balcony and an oversized three car garage, this home expands to an impressive 6,528 sq. ft. The gourmet kitchen is enough to make any chef proud. Imagine... life in the Portofino!



Portofino
4 Bedroom / 3.5 Bath
Den / Lanai / 3 Car Garage

First Floor Living	3,427 Sq. Ft.
Second Floor Living	845 Sq. Ft.
Total Living Area	4,272 Sq. Ft.
Entry	118
Covered Lanai	833
Covered Balcony	238
Garage	1,067
Total Under Roof	6,528 Sq. Ft.



Open Custom Home

Outside Dimensions: 93' wide x 89' deep